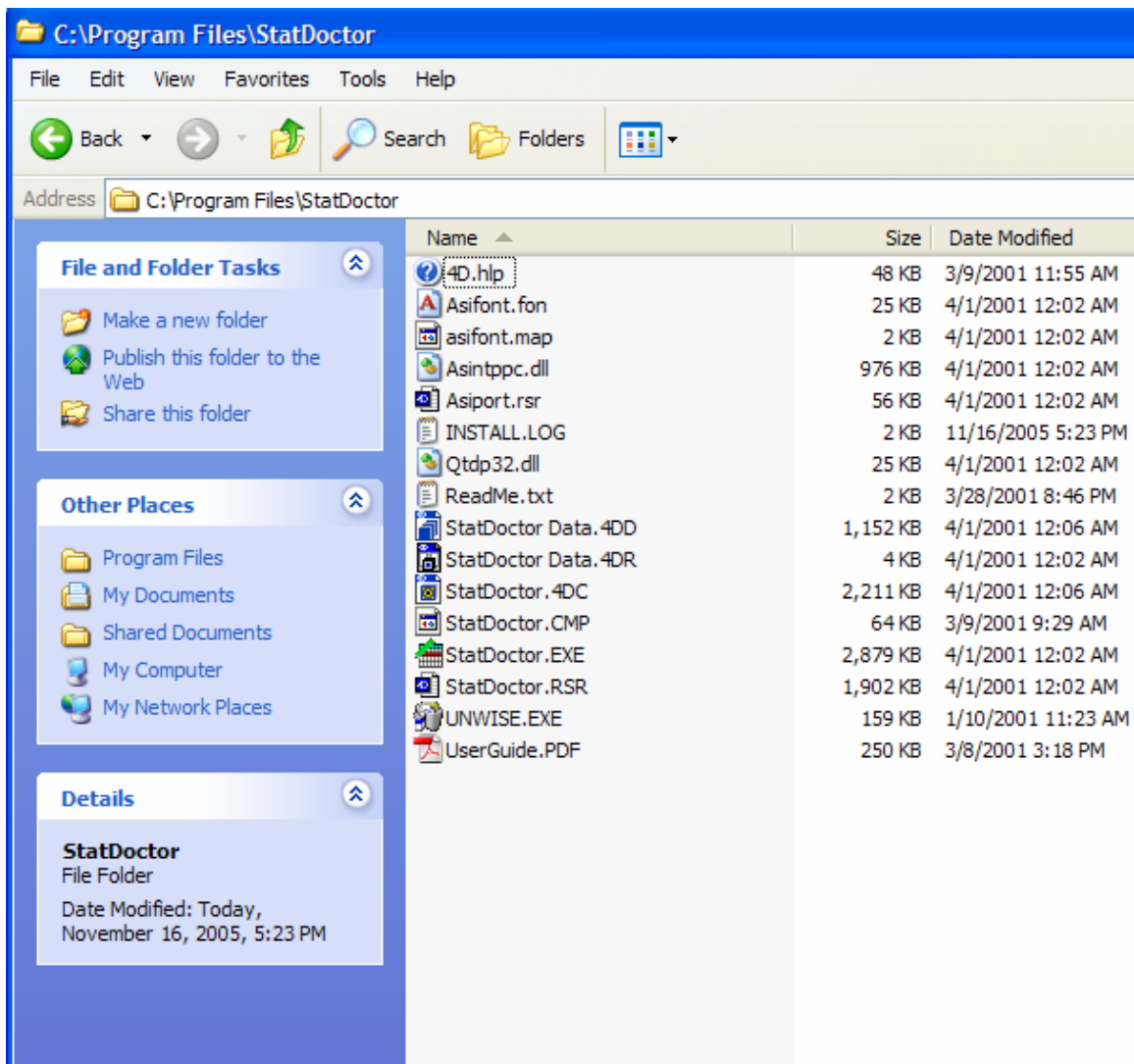


Upgrading StatDoctor to Version 1.3

StatDoctor 1.3.x offers improved compatibility with Microsoft Windows XP and also offers a new Hole Analysis report for examining your performance on a single hole.

Please follow these steps to upgrade your version of StatDoctor to the latest release: 1.3.x

The default installation of StatDoctor is to put the StatDoctor folder at C:\Program Files\StatDoctor.



1) Make a backup of your data.

There are two files in your C:\Program Files\StatDoctor folder that contain your scores and courses. The files are StatDoctor Data.4DD and StatDoctor Data.4DR (you may not see the .4DD and .4DR if your system is not set to display extensions).

These files should be backed up regularly. You can burn them onto a CD or copy them to another directory or desktop. If you are not sure how to do that, then simply select the files and select copy from the edit menu. Next, click on the desktop (your wallpaper) and select paste. This will paste a copy of the files on your desktop.

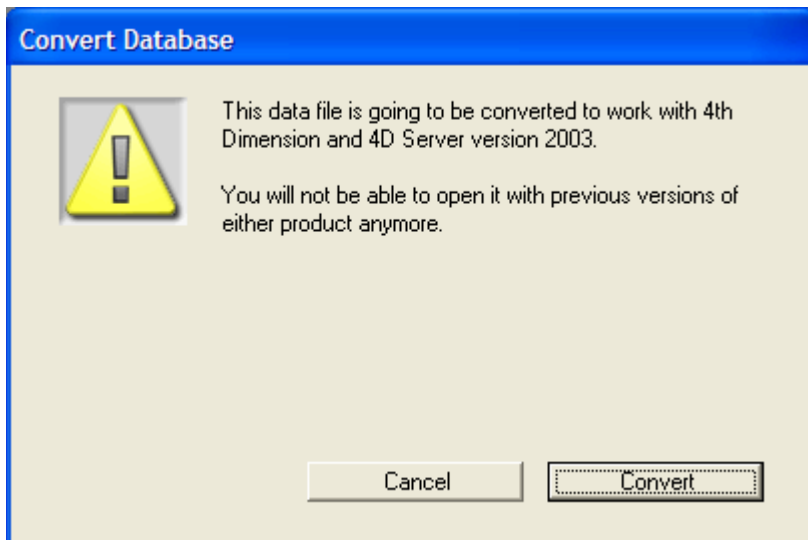
2) Run the new installer.

Make sure StatDoctor is not running and then run the new installer by double-clicking on the StatDoctor13Setup.exe. Follow the instructions in the installer (clicking next on each screen works fine) .

3) Run the new StatDoctor

When finished, run the new StatDoctor program (start->All Programs->StatDoctor).

Depending on which version you upgraded from, you will most likely get the following message on start up:



Click convert.

If everything went well, you should be running the new version of StatDoctor and your scores and courses will still be there. If not, see the next section.

Troubleshooting:

If your scores and courses are not there (just the demo ones), then the upgrade is not finding your original data files. In this case you will need to replace the files with the backup copies you created in step 1. Make sure StatDoctor is not running then do the following:

- 1) Go to the desktop and select the two StatDoctor Data files, and select copy from the edit menu, then go to the C:\Program Files\StatDoctor and select paste from the edit menu.
- 2) Run StatDoctor again and verify that it has your original data.

If you are still having problems, contact us at:

support@golfstatdoctor.com